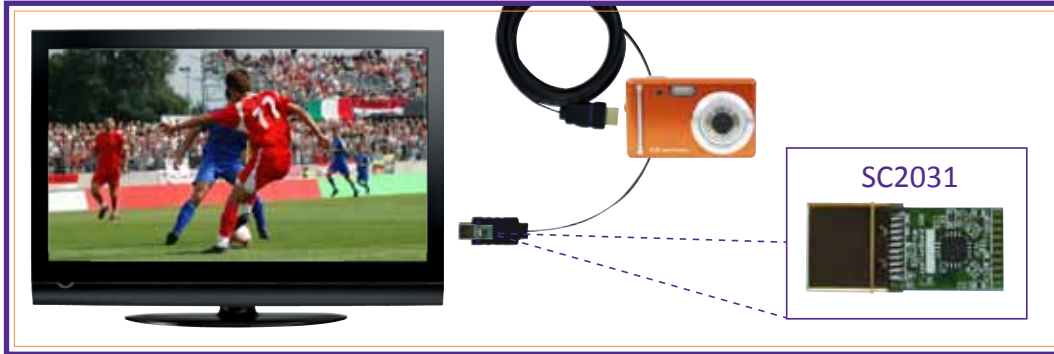


SC2031™ | HDMI™ Cable Booster

Product Brief

The SC2031™ is a compact HDMI™ 1.4-compliant embedded cable booster for use in super thin HDMI 1.4 Category 2 active cables. The SC2031 supports the full 10.2 Gbps data rate requirement of the HDMI 1.4 Category 2 cable and complies with the +5V 5mA power consumption requirements. The SC2031 operates without external power in a very compact 16-pin QFN (4mm x 4mm) package, small enough to fit inside a HDMI Type D connector.



Features

- HDMI 1.4 Category 2 cable compliant
- Supports up to 10.2 Gbps
- Supports up to 16-bit color resolution
- Supports up to 4k/2k video resolution
- Compatible with HDMI 1.4 HEAC
- Embedded OTP ROM for programmable equalization ratio and DC gain
- Each TMDS lane can be tested and programmed independently
- No external power source required
- Consumes less than 5mA with +5V voltage source
- Low-cost, 2-layer reference board design available
- Compact 16-pin QFN package (4mm x 4mm)

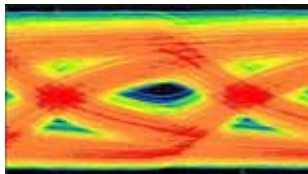
Applications

- HDMI 1.4 Category 2 cables
- Backplane interconnection
- Inline cable booster

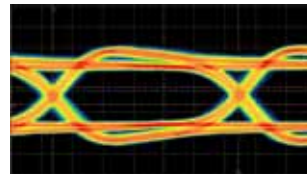
Testing

- Single insertion SC2031 active cable tester available from LiTek Technologies Co. Ltd.
- Designed to maximize efficiency during SC2031 active cable manufacturing
- Optimize, program and test SC2031 active cable in under 10 seconds

Eye Diagram

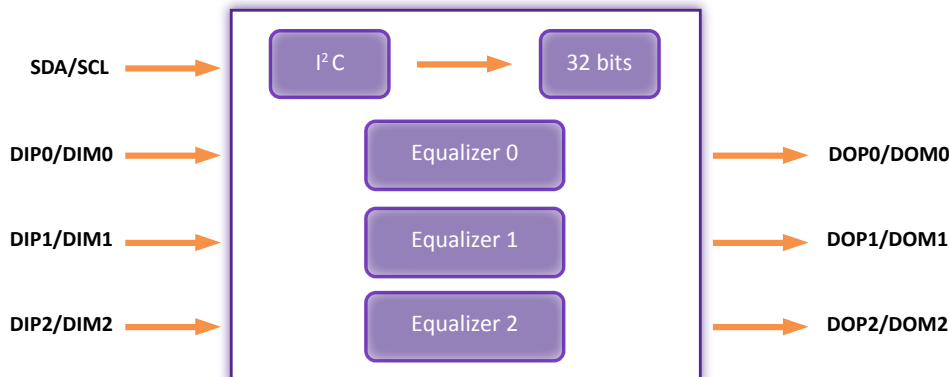


Without the SC2031



With the SC2031

SC2031 Block Diagram



For more information, contact ask@synerchip.com

Synerchip Co., Ltd.
880 E. Arques Avenue
Sunnyvale, CA 94085 USA
Tel: 408.733.2600